

Jahrgangsverantwortliche / Klassenlehrpersonen

g1 (Quarta)	AEM
22gA	SUG
22gB	BRD
22gC	ELS
22gD	GAH
22gE	SAB
22gF	GAA
22gG	Rll

g2 (Tertia)	STJ
21gA	NEE, MOA
21gB	SCN
21gC	HUL
21gD	HAI
21gE	STM
21gF	FRB, MAG
21gG	ANP

g3 (Sekunda)	KAM
20gA	EGA
20gB	FRT
20gC	MAP
20gD	DIC
20gE	MOM
20gF	IMG

g4 (Prima)	SEN
19gA	MIB
19gB	LIS
19gC	SUR
19gD	SAP
19gE	GOS
19gF	GAR

g1 (Quarta)	AEM
22gP	HEU
22gQ	HUN
22gR	BRO
22gS	BIS/FRM

g2 (Tertia)	PER
21gP	WYM
21gQ	MAU
21gR	ACK
21gS	STA

g3 (Sekunda)	KAM
20gP	HUF
20gQ	KOP
20gR	SPR
20gS	GIH, KAR

g4 (Prima)	SEN
19gP	SAS
19gQ	BAC
19gR	FRS/HAA
19gS	MAS

f1 (FMS)	SAR
21fA	LET
21fB	LIK
21fC	LOS
21fD	ZUT

f2 (FMS)	SAR
20fA	CIG
20fB	GEB
20fC	ROB

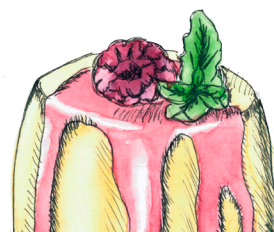
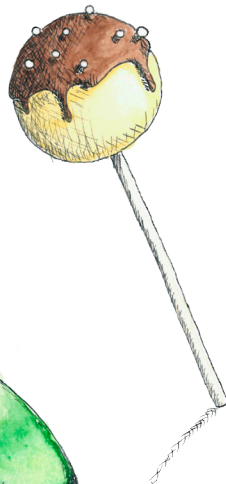
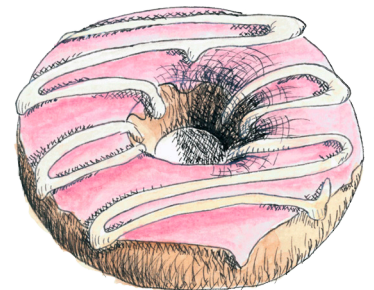
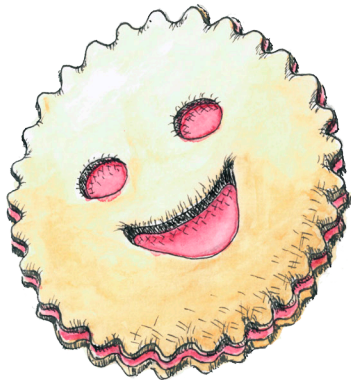
f3 (FMS)	SAR
19fA	BOA
19fB	MAE
19fC	RIR/BAU

f4 (FMPäd)	SAR
18fM	SAR

w1 (WMS)	STJ
21wA	MAM

w2 (WMS)	STJ
20wA	KIM

w3 (WMS)	STJ
19wA	SEE



Abbildungen:
Grundlagenfach BG 19gBC / 20gA